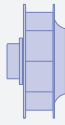
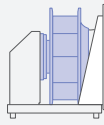
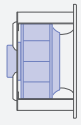
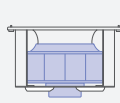
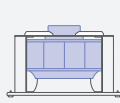


Performance data



Type	Characteristic curve	Speed	Operating point	Current	Motor input power	Suction side sound power level	Maximum ambient temperature
		n [min ⁻¹]		I [A]	P _{sys} [W]	L _{WAS} [dB]	
_40C-ZIK.DC.CR	I	1950	①	2.30	500	79	40
		1950	②	5.60	1250	74	
		1950	③	3.60	800	85	
	II	1750	④	1.70	360	76	60
		1750	⑤	4.00	920	71	
		1750	⑥	2.60	580	82	
	III	1580	⑦	1.30	280	73	
		1580	⑧	3.00	680	68	
		1580	⑨	2.00	440	79	
	IV	1350	⑩	0.86	180	69	
		1350	⑪	2.00	440	65	
		1350	⑫	1.35	280	75	
	V	1100	⑬	0.54	110	63	
		1100	⑭	1.15	240	60	
		1100	⑮	0.76	160	69	

Current values determined at 230V

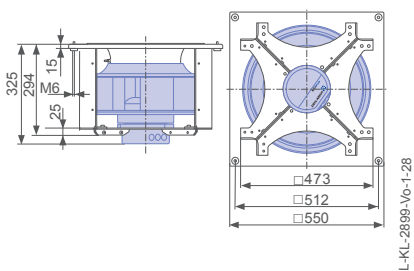
Fan ordering information

Design	RH*	ER**	GR**	GR**	GR**
Installation position	H/Vu/Vo	H	H	Vo	Vu
					
Type	RH40C-ZIK.DC.CR	ER40C-ZIK.DC.CR	GR40C-ZIK.DC.CR	GR40C-ZIK.DC.CR	GR40C-ZIK.DC.CR
Basic electronics					
Article no.	114502	114590/A01	114542/H01	114542/O01	114542/U01
Premium electronics					
Article no.	114503				
Weight [kg]	12.00	25.00	28.00	28.00	28.00
* Inlet ring not included					
** Inlet ring integrated					

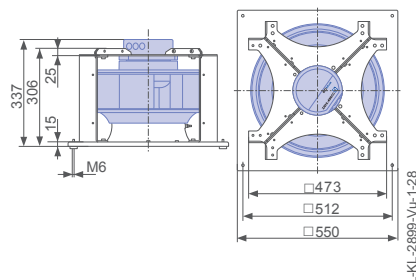
Control technology

Control module  ➔ Page 464	Operating terminal  ➔ Page 476	Expansion module  ➔ Page 473
---	---	---

Ventilation unit GR in installation position Vo



Ventilation unit GR in installation position Vu

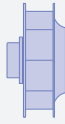
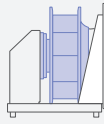
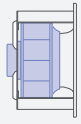
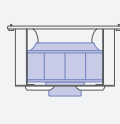
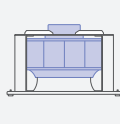


Performance data




Type	Characteristic curve	Speed	Operating point	Current	Motor input power	Suction side sound power level	Maximum ambient temperature
		n [min ⁻¹]		I [A]	P _{sys} [W]	L _{WAS} [dB]	
_40C-ZID.DC.CR	I	2250	①	1.95	740	83	50
		2250	②	5.20	1950	77	
		2250	③	3.00	1150	88	
	II	1950	④	1.35	500	79	60
		1950	⑤	3.30	1250	73	
		1950	⑥	2.00	760	84	
	III	1750	⑦	1.00	370	76	
		1750	⑧	2.40	900	70	
		1750	⑨	1.50	560	82	
	IV	1500	⑩	0.72	240	72	
		1500	⑪	1.55	580	66	
		1500	⑫	1.00	370	78	
	V	1270	⑬	0.52	160	67	
		1270	⑭	1.00	360	62	
		1270	⑮	0.68	230	73	

Current values determined at 230V

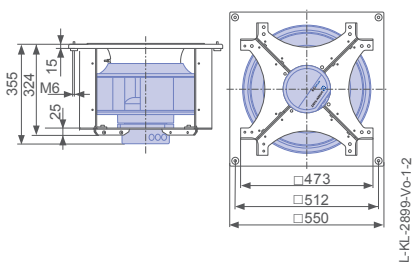
Fan ordering information

Design	RH*	ER**	GR**	GR**	GR**
Installation position	H/Vu/Vo	H	H	Vo	Vu
					
Type	RH40C-ZID.DC.CR	ER40C-ZID.DC.CR	GR40C-ZID.DC.CR	GR40C-ZID.DC.CR	GR40C-ZID.DC.CR
Basic electronics					
Article no.	114510	114594/A01	114546/H01	114546/O01	114546/U01
Premium electronics					
Article no.	114511				
Weight [kg]	12.00	25.00	28.00	28.00	28.00
* Inlet ring not included					
** Inlet ring integrated					

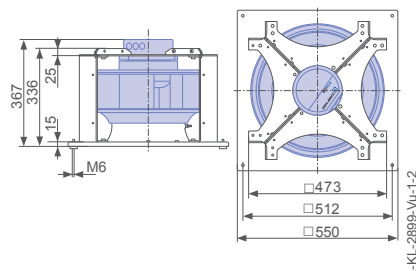
Control technology

Control module  ➤ Page 464	Operating terminal  ➤ Page 476	Expansion module  ➤ Page 473
---	---	---

Ventilation unit GR in installation position Vo



Ventilation unit GR in installation position Vu



Cpro-ECblue

for three phase alternating current, 200-240 V

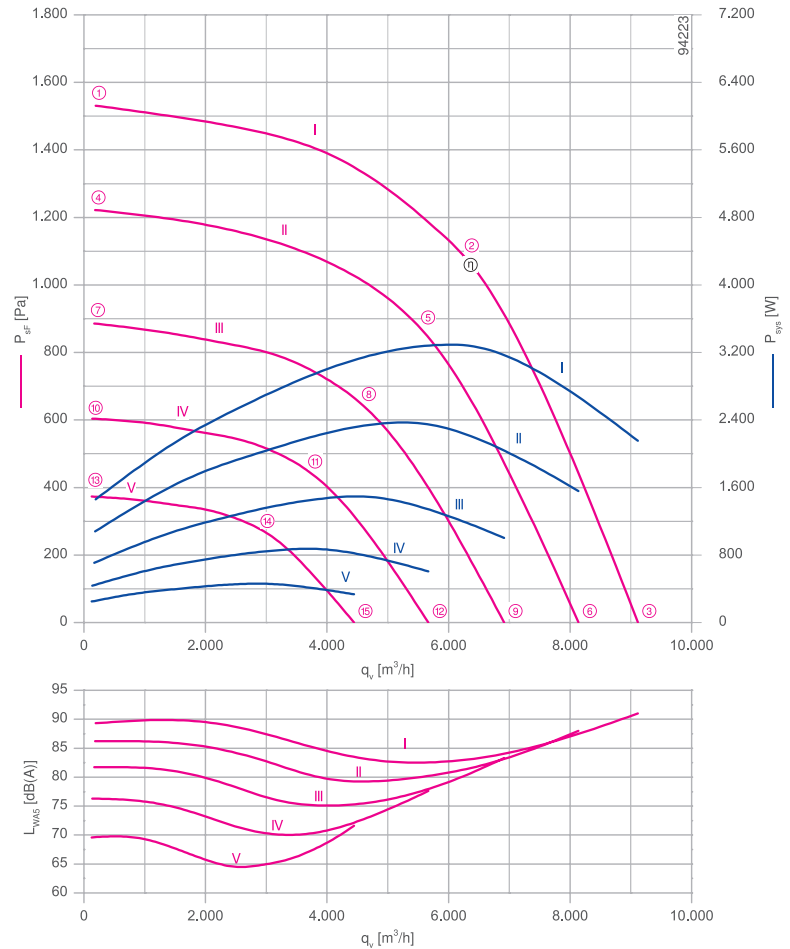
RH40C-ZID



Description

Motor technology: EC
 Rated voltage U: **3-200-240 V***
 Rated frequency f: **50/60 Hz***
 Motor input power P: **3.30 kW***
 Rated current I: **10.00-8.40 A***
 Rated speed n: **2630 min⁻¹***
 Thermal class: **THCL155***
 Min. permitted ambient temperature t_{r1} : -20 °C
 Max. permitted ambient temperature t_{r2} at n_{max} : 50 °C
 Electrical connection: integrated Controller
 Number of blades : 7
 Balancing quality: G 2.5
 Protection class: IP54
 Motor protection: Integrated active temperature management
 Impeller : ZAmid, uncoated, Ultramarine blue
 Conformity: ErP 2015, CE
ErP-data
 Efficiency η_{statA} : 61.8 %
 Efficiency: $N_{actual} = 66.9 / N_{target} = 62^{**}$
 EC controller integrated
 *Rated data
 **ErP 2015

Characteristic curve

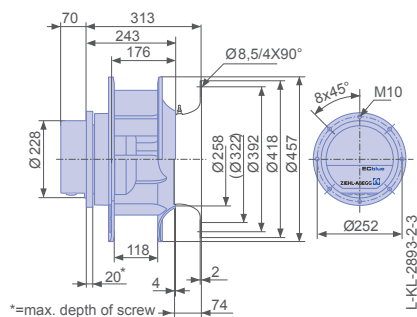


measured with inlet ring, without guard grille according to ISO 5801

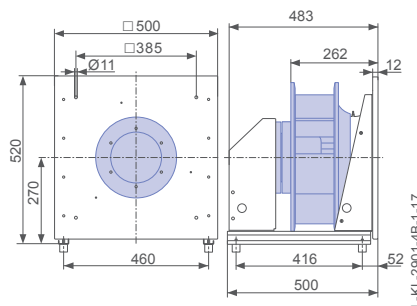
➤ Inlet ring	00401297	Page 450
➤ Connection diagram	1360-401	Page 548
➤ Rubber dampers	30x30 / 40	Page 454
➤ Spring vibration dampers	MSN 4	Page 454
➤ System components		Page 448

Dimensions [mm]

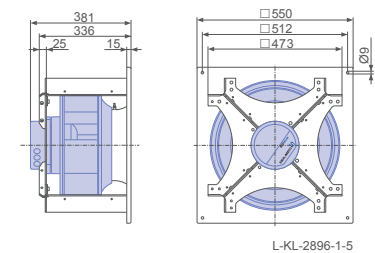
Free-running motor impeller RH in installation position H/V/u/Vo



Plug fan ER in installation position H



Ventilation unit GR in installation position H



Performance data

Type	Characteristic curve	Speed	Operating point	Current	Motor input power	Suction side sound power level	Maximum ambient temperature
		n [min ⁻¹]		I [A]	P _{sys} [W]	L _{WAS} [dB]	
_40C-ZID.GG.CR	I	2630	①	3.90	1450	89	50
		2630	②	8.60	3300	83	
		2630	③	5.60	2200	91	
	II	2350	④	2.90	1100	86	60
		2350	⑤	6.20	2400	80	
		2350	⑥	4.20	1550	88	
	III	2000	⑦	1.90	700	82	
		2000	⑧	3.90	1500	76	
		2000	⑨	2.70	1000	83	
	IV	1650	⑩	1.20	440	76	
		1650	⑪	2.30	880	70	
		1650	⑫	1.65	600	78	
	V	1300	⑬	0.76	250	70	
		1300	⑭	1.25	460	65	
		1300	⑮	0.96	330	72	

Current values determined at 230V

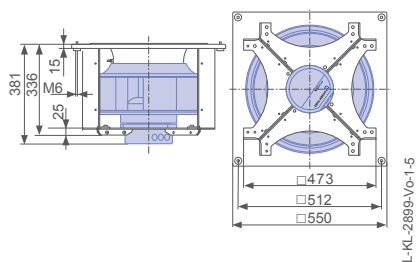
Fan ordering information

Design	RH*	ER**	GR**	GR**	GR**
Installation position	H/Vu/Vo	H	H	Vo	Vu
					
Type	RH40C-ZID.GG.CR	ER40C-ZID.GG.CR	GR40C-ZID.GG.CR	GR40C-ZID.GG.CR	GR40C-ZID.GG.CR
Basic electronics					
Article no.	114605	114663/A01	114643/H01	114643/O01	114643/U01
Premium electronics					
Article no.	114606				
Weight [kg]	21.00	34.00	37.00	37.00	37.00
* Inlet ring not included					
** Inlet ring integrated					

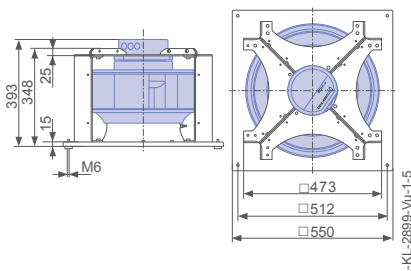
Control technology

Control module  ➤ Page 464	Operating terminal  ➤ Page 476	Expansion module  ➤ Page 473
---	---	---

Ventilation unit GR in installation position Vo



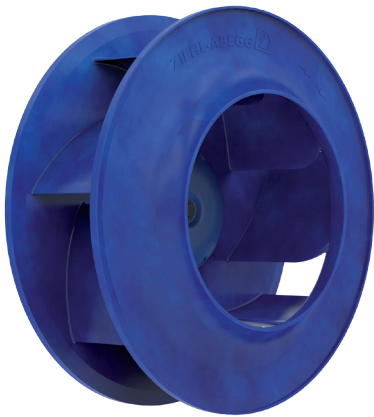
Ventilation unit GR in installation position Vu



Cpro-ECblue

for three phase alternating current, 380-480 V

RH40C-ZID



Description

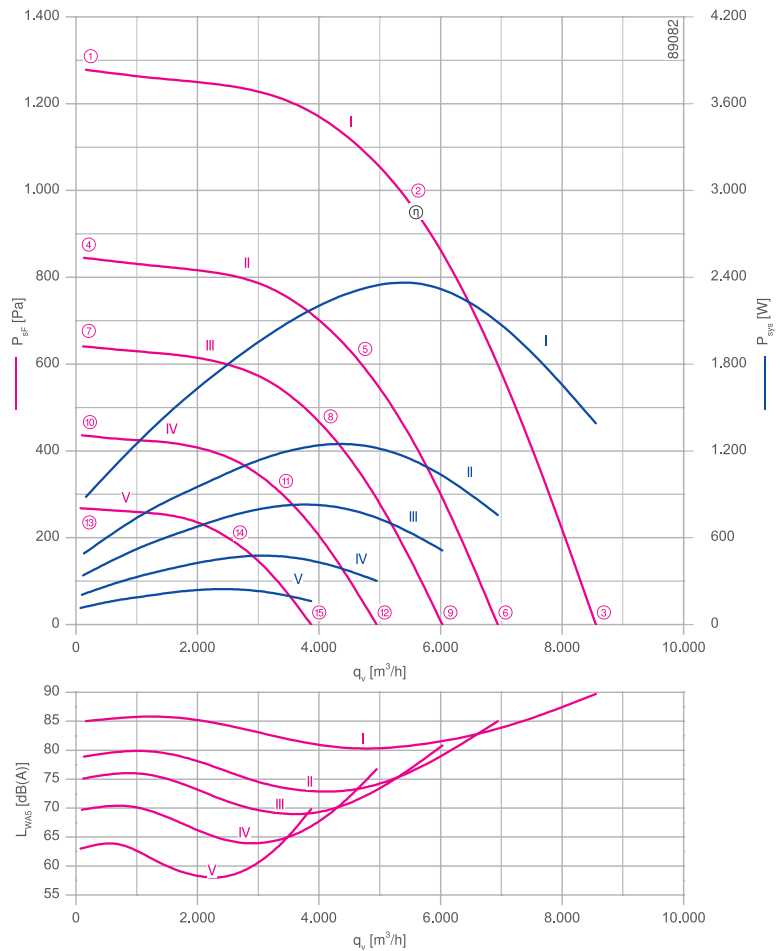
Motor technology: EC
 Rated voltage U: **3-380-480 V***
 Rated frequency f: **50/60 Hz***
 Motor input power P: **2.40 kW***
 Rated current I: **3.90-3.10 A***
 Rated speed n: **2400 min⁻¹***
 Thermal class: **THCL155***
 Min. permitted ambient temperature t_{r1} : -20 °C
 Max. permitted ambient temperature t_{r2} at n_{max} : 40 °C
 Electrical connection: integrated Controller
 Number of blades : 7
 Balancing quality: G 2.5
 Protection class: IP54
 Motor protection: Integrated active temperature management
 Impeller : ZAmid, uncoated, Ultramarine blue
 Conformity: ErP 2015, CE

ErP-data

Efficiency η_{statA} : 70.3 %
 Efficiency: $N_{actual} = 79.8 / N_{target} = 62^{**}$
 EC controller integrated

*Rated data
 **ErP 2015

Characteristic curve

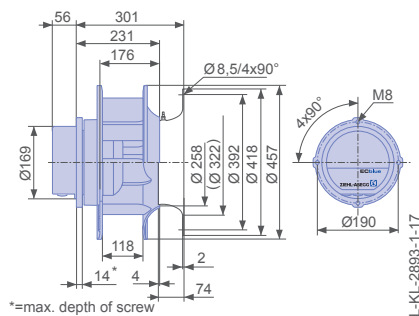


measured with inlet ring, without guard grille according to ISO 5801

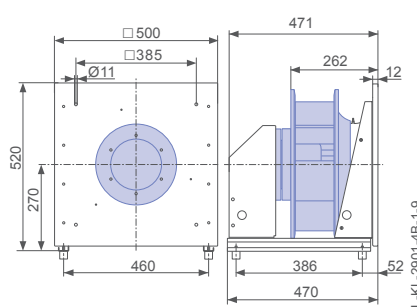
➤ Inlet ring	00401297	Page 450
➤ Connection diagram	1360-401	Page 548
➤ Rubber dampers	30x30 / 40	Page 454
➤ Spring vibration dampers	MSN 4	Page 454
➤ System components		Page 448

Dimensions [mm]

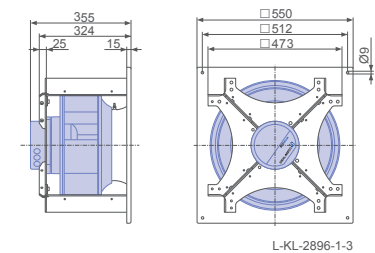
Free-running motor impeller RH in installation position H/V/u/Vo



Plug fan ER in installation position H



Ventilation unit GR in installation position H

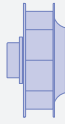
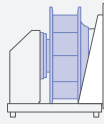
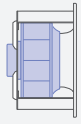
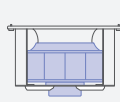
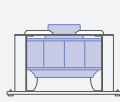


Performance data



Type	Characteristic curve	Speed	Operating point	Current	Motor input power	Suction side sound power level	Maximum ambient temperature
		n [min ⁻¹]		I [A]	P _{sys} [W]	L _{WAS} [dB]	
_40C-ZID.DC.CR	I	2400	①	1.45	880	85	40
		2400	②	3.70	2400	81	
		2400	③	2.20	1400	90	
	II	2300	④	1.30	780	84	60
		2300	⑤	3.20	2100	77	
		2300	⑥	1.95	1200	89	
	III	1950	⑦	0.90	500	79	
		1950	⑧	2.00	1250	73	
		1950	⑨	1.30	760	85	
	IV	1700	⑩	0.68	340	75	
		1700	⑪	1.40	820	69	
		1700	⑫	0.92	520	81	
	V	1400	⑬	0.50	210	70	
		1400	⑭	0.88	480	64	
		1400	⑮	0.64	300	77	

Current values determined at 400V

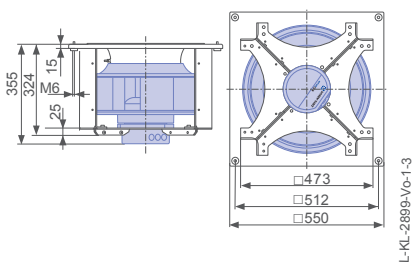
Fan ordering information

Design	RH*	ER**	GR**	GR**	GR**
Installation position	H/Vu/Vo	H	H	Vo	Vu
					
Type	RH40C-ZID.DC.CR	ER40C-ZID.DC.CR	GR40C-ZID.DC.CR	GR40C-ZID.DC.CR	GR40C-ZID.DC.CR
Basic electronics					
Article no.	114512	114595/A01	114547/H01	114547/O01	114547/U01
Premium electronics					
Article no.	114513				
Weight [kg]	12.00	25.00	28.00	29.00	29.00
* Inlet ring not included					
** Inlet ring integrated					

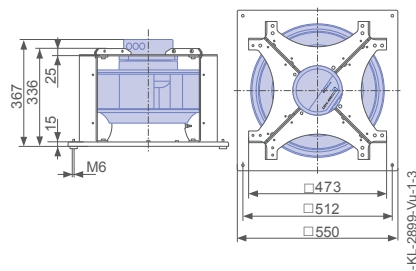
Control technology

Control module	Operating terminal	Expansion module
		
➤ Page 464	➤ Page 476	➤ Page 473

Ventilation unit GR in installation position Vo



Ventilation unit GR in installation position Vu



Cpro-ECblue

for three phase alternating current, 380-480 V

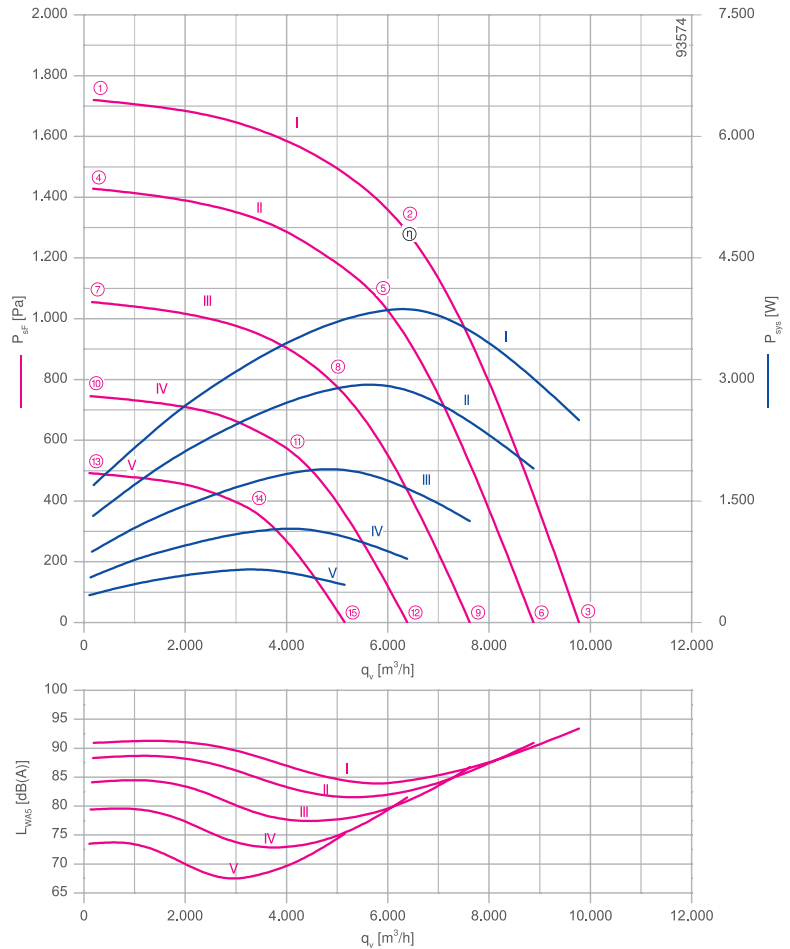
RH40C-ZID



Description

Motor technology: EC
 Rated voltage U: **3-380-480 V***
 Rated frequency f: **50/60 Hz***
 Motor input power P: **3.90 kW***
 Rated current I: **6.20-5.00 A***
 Rated speed n: **2810 min⁻¹***
 Thermal class: **THCL155***
 Min. permitted ambient temperature t_{r1} : -20 °C
 Max. permitted ambient temperature t_{r2} at n_{max} : 55 °C
 Electrical connection: integrated Controller
 Number of blades : 7
 Balancing quality: G 2.5
 Protection class: IP54
 Motor protection: Integrated active temperature management
 Impeller : ZAmid, uncoated, Ultramarine blue
 Conformity: ErP 2015, CE
ErP-data
 Efficiency η_{statA} : 63.3 %
 Efficiency: $N_{actual} = 67.7 / N_{target} = 62^{**}$
 EC controller integrated
 *Rated data
 **ErP 2015

Characteristic curve

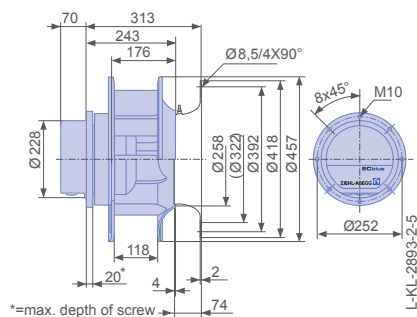


measured with inlet ring, without guard grille according to ISO 5801

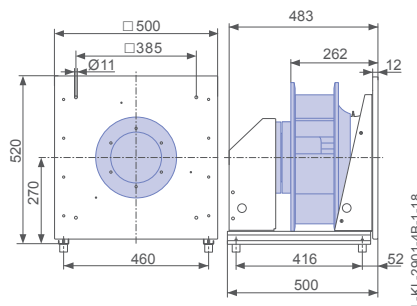
➤ Inlet ring	00401297	Page 450
➤ Connection diagram	1360-401	Page 548
➤ Rubber dampers	30x30 / 40	Page 454
➤ Spring vibration dampers	MSN 4	Page 454
➤ System components		Page 448

Dimensions [mm]

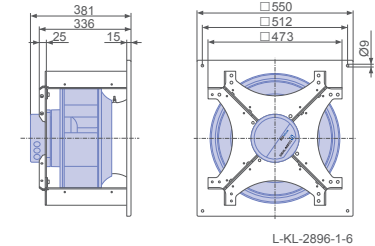
Free-running motor impeller RH in installation position H/Vu/Vo



Plug fan ER in installation position H



Ventilation unit GR in installation position H

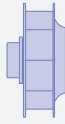
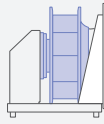
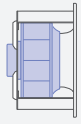
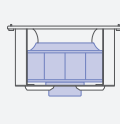
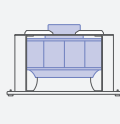


Performance data



Type	Characteristic curve	Speed	Operating point	Current	Motor input power	Suction side sound power level	Maximum ambient temperature
		n [min ⁻¹]		I [A]	P _{sys} [W]	L _{WAS} [dB]	
_40C-ZID.GG.CR	I	2810	①	2.70	1700	91	55
		2810	②	6.00	3900	84	
		2810	③	3.80	2500	93	
	II	2560	④	2.10	1300	88	60
		2560	⑤	4.60	2900	82	
		2560	⑥	2.90	1900	91	
	III	2200	⑦	1.45	880	84	
		2200	⑧	2.90	1900	78	
		2200	⑨	2.00	1250	87	
	IV	1850	⑩	1.00	560	79	
		1850	⑪	1.85	1150	73	
		1850	⑫	1.30	780	82	
	V	1500	⑬	0.70	340	74	
		1500	⑭	1.15	660	68	
		1500	⑮	0.88	460	75	

Current values determined at 400V

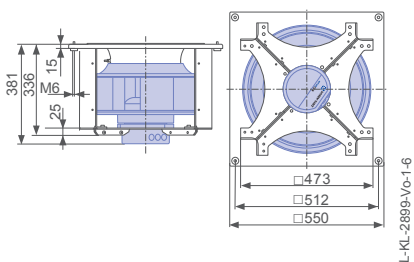
Fan ordering information

Design	RH*	ER**	GR**	GR**	GR**
Installation position	H/Vu/Vo	H	H	Vo	Vu
					
Type	RH40C-ZID.GG.CR	ER40C-ZID.GG.CR	GR40C-ZID.GG.CR	GR40C-ZID.GG.CR	GR40C-ZID.GG.CR
Basic electronics					
Article no.	114607	114664/A01	114644/H01	114644/O01	114644/U01
Premium electronics					
Article no.	114608				
Weight [kg]	21.00	34.00	37.00	37.00	37.00
* Inlet ring not included					
** Inlet ring integrated					

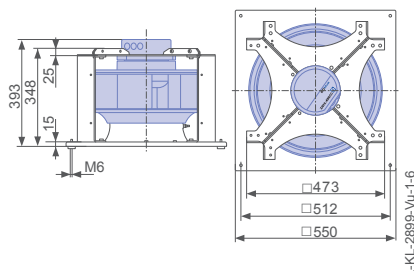
Control technology

Control module	Operating terminal	Expansion module
		
➤ Page 464	➤ Page 476	➤ Page 473

Ventilation unit GR in installation position Vo



Ventilation unit GR in installation position Vu



Cpro-ECblue

for three phase alternating current, 380-480 V

RH40C-ZID



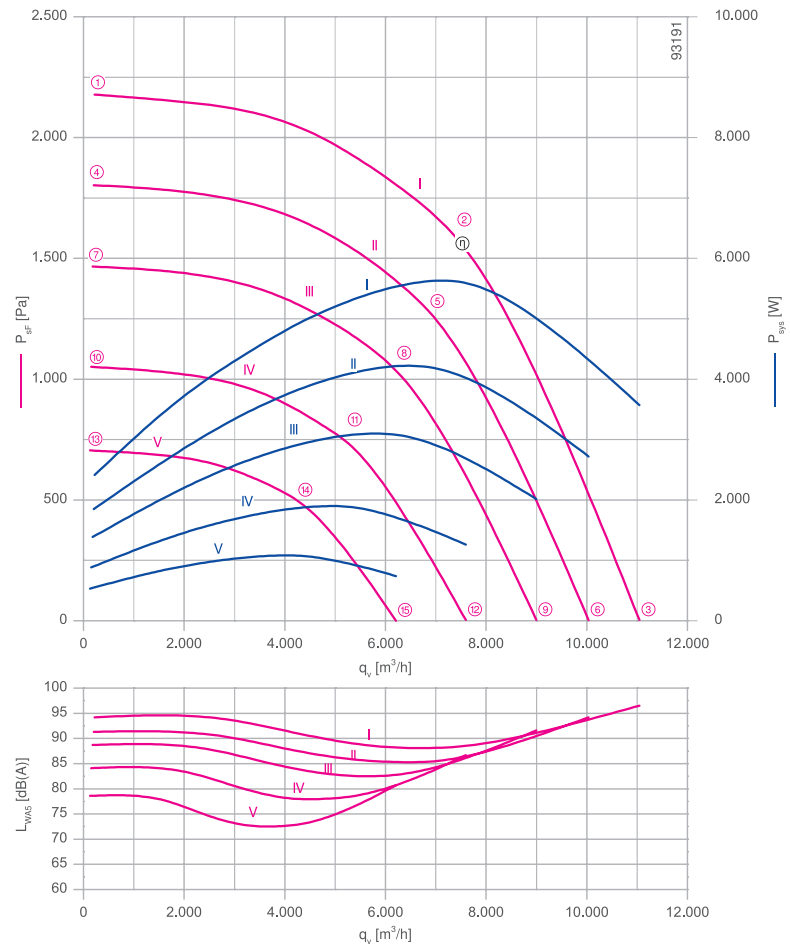
Description

Motor technology: EC
 Rated voltage U: **3-380-480 V***
 Rated frequency f: **50/60 Hz***
 Motor input power P: **5,60 kW***
 Rated current I: **9,00-7,10 A***
 Rated speed n: **3170 min⁻¹***
 Thermal class: **THCL155***
 Min. permitted ambient temperature t_{R} : -20 °C
 Max. permitted ambient temperature t_{R} at n_{max} : 40 °C
 Electrical connection: integrated Controller
 Number of blades : 7
 Balancing quality: G 2.5
 Protection class: IP54
 Motor protection: Integrated active temperature management
 Impeller : ZAmid, uncoated, Ultramarine blue
 Conformity: ErP 2015, CE

ErP-data

Efficiency η_{statA} : 61.8 %
 Efficiency: $N_{actual} = 64.4 / N_{target} = 62^{**}$
 EC controller integrated
 *Rated data
 **ErP 2015

Characteristic curve

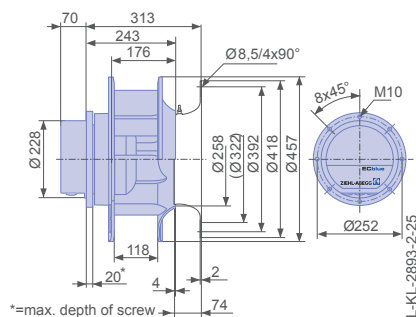


measured with inlet ring, without guard grille according to ISO 5801

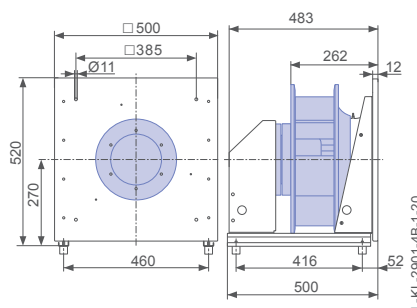
- Inlet ring 00401297 Page 450
- Connection diagram 1360-401 Page 548
- Rubber dampers 30x30 / 40 Page 454
- Spring vibration dampers MSN 4 Page 454
- System components Page 448

Dimensions [mm]

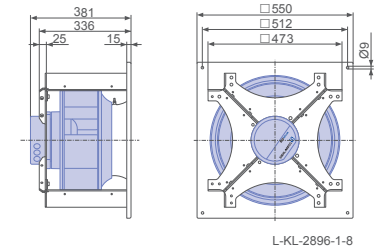
Free-running motor impeller RH in installation position H/Vu/Vo



Plug fan ER in installation position H



Ventilation unit GR in installation position H



Performance data

Type	Characteristic curve	Speed	Operating point	Current	Motor input power	Suction side sound power level	Maximum ambient temperature
		n [min ⁻¹]		I [A]	P _{sys} [W]	L _{WAS} [dB]	
_40C-ZID.GG.CR	I	3170	①	3.70	2400	94	40
		3170	②	8.60	5600	88	
		3170	③	5.40	3600	97	
	II	2880	④	2.90	1850	91	60
		2880	⑤	6.40	4200	85	
		2880	⑥	4.20	2700	94	
	III	2600	⑦	2.20	1400	89	
		2600	⑧	4.80	3100	83	
		2600	⑨	3.10	2000	92	
	IV	2200	⑩	1.50	880	84	
		2200	⑪	2.90	1900	78	
		2200	⑫	2.00	1250	87	
	V	1800	⑬	1.00	540	79	
		1800	⑭	1.75	1100	73	
		1800	⑮	1.30	740	81	

Current values determined at 400V

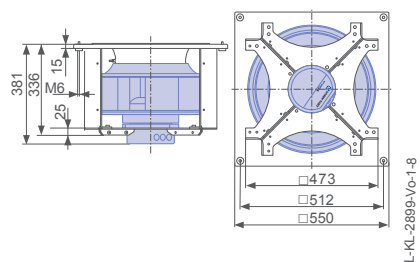
Fan ordering information

Design	RH*	ER**	GR**	GR**	GR**
Installation position	H/Vu/Vo	H	H	Vo	Vu
					
Type	RH40C-ZID.GG.CR	ER40C-ZID.GG.CR	GR40C-ZID.GG.CR	GR40C-ZID.GG.CR	GR40C-ZID.GG.CR
Basic electronics					
Article no.	114703	114729/A01	114720/H01	114720/O01	114720/U01
Premium electronics					
Article no.	114704				
Weight [kg]	21.00	34.00	37.00	37.00	37.00
* Inlet ring not included					
** Inlet ring integrated					

Control technology

Control module  ➤ Page 464	Operating terminal  ➤ Page 476	Expansion module  ➤ Page 473
---	---	---

Ventilation unit GR in installation position Vo



Ventilation unit GR in installation position Vu

