

Cpro-ECblue

for single phase alternating current, 200-277 V

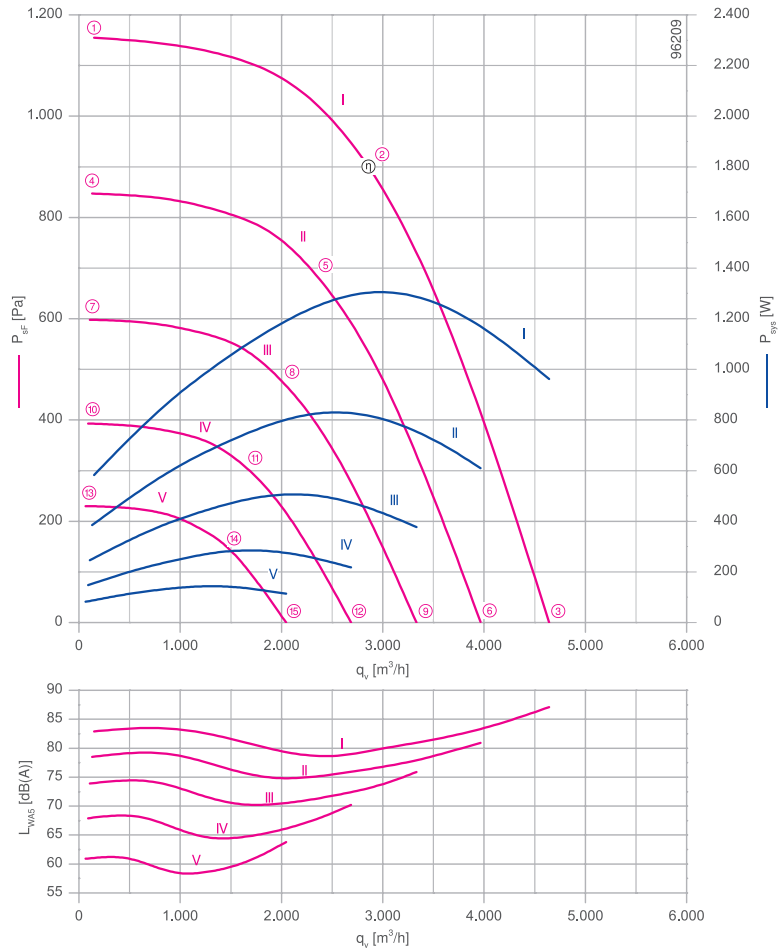
RH31C-ZIK



Description

Motor technology: EC
 Rated voltage U: 1-200-277 V*
 Rated frequency f: 50/60 Hz*
 Motor input power P: 1.30 kW*
 Rated current I: 6.60-4.80 A*
 Rated speed n: 2920 min⁻¹*
 Thermal class: THCL155*
 Min. permitted ambient temperature t_R: -20 °C
 Max. permitted ambient temperature t_R at n_{max}: 45 °C
 Electrical connection: integrated Controller
 Number of blades: 7
 Balancing quality: G 6.3
 Protection class: IP54
 Motor protection: Integrated active temperature management
 Impeller: ZAmid, uncoated, Ultramarine blue
 Conformity: ErP 2015, CE
ErP-data
 Efficiency η_{statA}: 60.7 %
 Efficiency: N_{actual} = 70.0 / N_{target} = 62**
 EC controller integrated
 *Rated data
 **ErP 2015

Characteristic curve

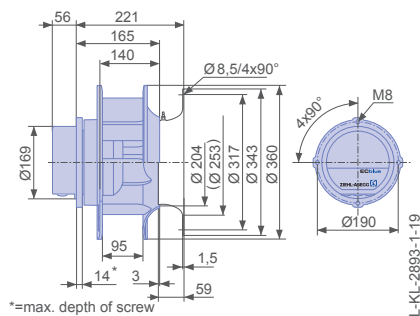


measured with inlet ring, without guard grille according to ISO 5801

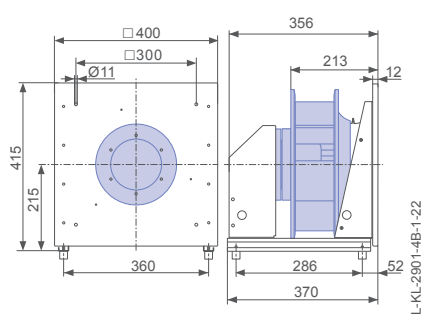
➤ Inlet ring	00401506	Page 450
➤ Connection diagram	1360-401	Page 548
➤ Rubber dampers	30x30 / 40	Page 454
➤ Spring vibration dampers	MSN 4	Page 454
➤ System components		Page 448

Dimensions [mm]

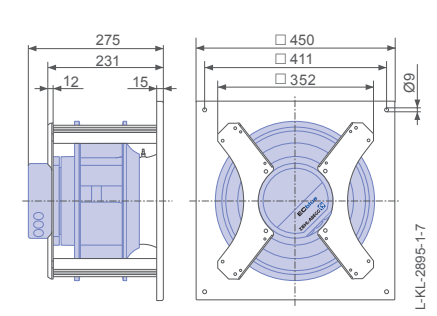
Free-running motor impeller RH in installation position H/U/Vo



Plug fan ER in installation position H



Ventilation unit GR in installation position H

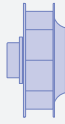
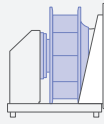
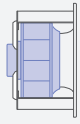
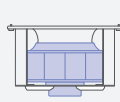
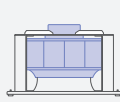


Performance data

Type	Characteristic curve	Speed	Operating point	Current	Motor input power	Suction side sound power level	Maximum ambient temperature
		n [min ⁻¹]		I [A]	P _{sys} [W]	L _{WAS} [dB]	
_31C-ZIK.DC.CR	I	2920	①	2.70	580	83	45
		2920	②	5.80	1300	80	
		2920	③	4.20	960	87	
	II	2500	④	1.80	390	79	60
		2500	⑤	3.70	820	76	
		2500	⑥	2.80	600	81	
	III	2100	⑦	1.15	250	74	
		2100	⑧	2.40	500	71	
		2100	⑨	1.75	380	76	
	IV	1700	⑩	0.70	150	68	
		1700	⑪	1.35	280	65	
		1700	⑫	1.00	220	70	
	V	1300	⑬	0.44	80	61	
		1300	⑭	0.68	140	59	
		1300	⑮	0.56	110	64	

Current values determined at 230V

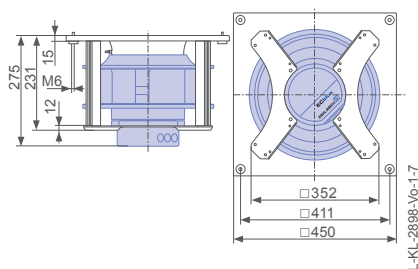
Fan ordering information

Design	RH*	ER**	GR**	GR**	GR**
Installation position	H/Vu/Vo	H	H	Vo	Vu
					
Type	RH31C-ZIK.DC.CR	ER31C-ZIK.DC.CR	GR31C-ZIK.DC.CR	GR31C-ZIK.DC.CR	GR31C-ZIK.DC.CR
Basic electronics					
Article no.	114478	114578/A01	114530/H01	114530/O01	114530/U01
Premium electronics					
Article no.	114479				
Weight [kg]	10.00	17.00	16.00	16.00	16.00
	* Inlet ring not included				
	** Inlet ring integrated				

Control technology

Control module	Operating terminal	Expansion module
		
➤ Page 464	➤ Page 476	➤ Page 473

Ventilation unit GR in installation position Vo



Ventilation unit GR in installation position Vu

