

# Cpro-ECblue

for single phase alternating current, 200-277 V

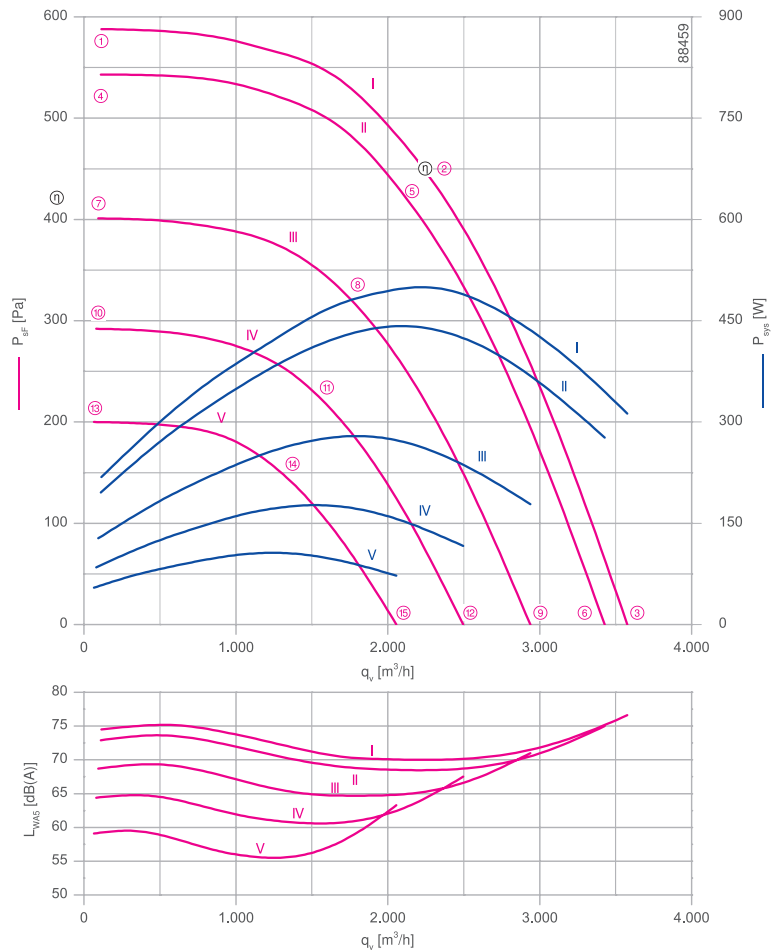
RH31C-6ID



## Description

Motor technology: EC  
 Rated voltage U: 1~200-277 V\*  
 Rated frequency f: 50/60 Hz\*  
 Motor input power P: 0.50 kW\*  
 Rated current I: 2.60-1.90 A\*  
 Rated speed n: 2060 min<sup>-1</sup>\*\*  
 Thermal class: THCL155\*  
 Min. permitted ambient temperature t<sub>r</sub>: -20 °C  
 Max. permitted ambient temperature t<sub>r</sub> at n<sub>max</sub>: 50 °C  
 Electrical connection: Integrated controller with attached cable  
 Number of blades : 7  
 Balancing quality: G 6.3  
 Protection class: IP54  
 Motor protection: Integrated active temperature management  
 Impeller : ZAmid, uncoated, Ultramarine blue  
 Conformity: ErP 2015, CE  
**ErP-data**  
 Efficiency η<sub>statA</sub>: 63.6 %  
 Efficiency: N<sub>actual</sub> = 77.2 / N<sub>target</sub> = 62\*\*  
 EC controller integrated  
 \*Rated data  
 \*\*ErP 2015

## Characteristic curve

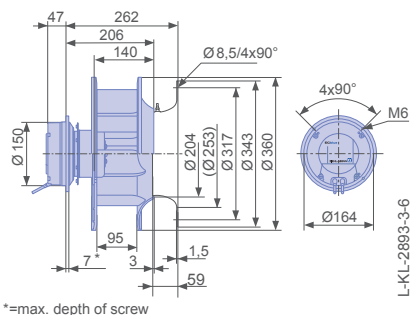


measured with inlet ring, without guard grille according to ISO 5801

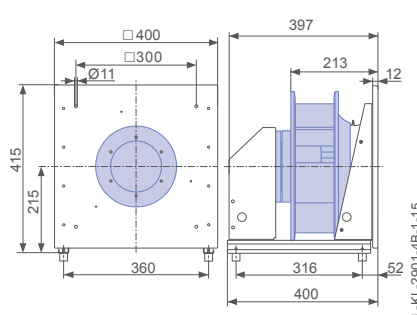
➤ Inlet ring	00401506	Page 450
➤ Connection diagram	KT00044A	Page 547
➤ Rubber dampers	30x30 / 40	Page 454
➤ Spring vibration dampers	MSN 3	Page 454
➤ System components		Page 448

## Dimensions [mm]

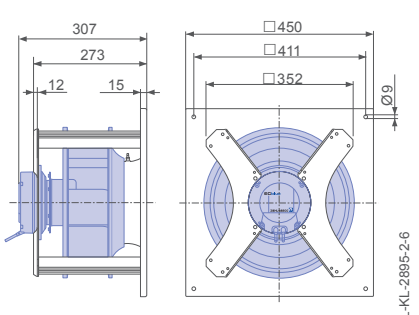
Free-running motor impeller RH in installation position H/V/u/Vo



Plug fan ER in installation position H



Ventilation unit GR in installation position H


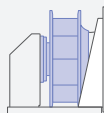
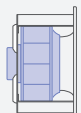
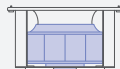



Performance data

Type	Characteristic curve	Speed	Operating point	Current	Motor input power	Suction side sound power level
		n [min <sup>-1</sup> ]		I [A]	P <sub>sys</sub> [W]	L <sub>WA5</sub> [dB]
_31C-6ID.BF.CR	I	2060	①	1.05	220	75
		2060	②	2.30	500	70
		2060	③	1.45	310	77
	II	1980	④	0.94	200	73
		1980	⑤	2.00	440	69
		1980	⑥	1.30	280	75
	III	1700	⑦	0.64	130	69
		1700	⑧	1.30	280	65
		1700	⑨	0.88	180	71
	IV	1450	⑩	0.44	85	64
		1450	⑪	0.86	180	61
		1450	⑫	0.58	120	68
	V	1200	⑬	0.30	55	59
		1200	⑭	0.54	110	56
		1200	⑮	0.38	70	63

Current values determined at 230V

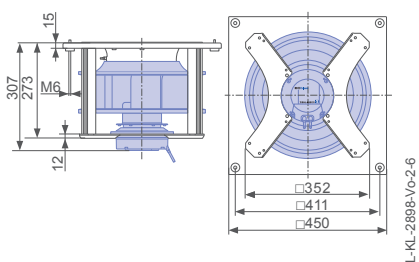
Fan ordering information

Design	RH*	ER**	GR**	GR**	GR**
Installation position	H/Vu/Vo	H	H	Vo	Vu
					
<b>Type</b>	<b>RH31C-6ID.BF.CR</b>	<b>ER31C-6ID.BF.CR</b>	<b>GR31C-6ID.BF.CR</b>	<b>GR31C-6ID.BF.CR</b>	<b>GR31C-6ID.BF.CR</b>
Basic electronics					
<b>Article no.</b>	<b>114477</b>	<b>114577/A01</b>	<b>114529/H01</b>	<b>114529/O01</b>	<b>114529/U01</b>
Weight [kg]	6.50	15.00	13.00	13.00	13.00
* Inlet ring not included					
** Inlet ring integrated					

Control technology

Control module	Operating terminal	Expansion module
		
➤ Page 464	➤ Page 476	➤ Page 473

Ventilation unit GR in installation position Vo



Ventilation unit GR in installation position Vu

