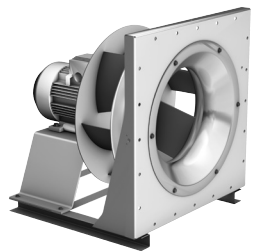


System efficiencies



Comparison system efficiencies η_{se} (impeller, motor, inverter)

RLM E6-2528-	η_{sa}	64	70	74	76	74	70	60	%
2W-14 4400 1/min	η_{se}	51	56	59	60	59	56	48	%
BI-BW 4400 1/min	η_{se}	54	59	62	63	61	58	50	%
BE-AV 3910 1/min	η_{se}	54	59	62	63	61	58	50	%
BI-IG 3850 1/min	η_{se}	55	60	63	65	63	66	51	%
BE-IG 4000 1/min	η_{se}	55	61	64	66	64	61	52	%

Formula symbols

η_{se} = overall static efficiency (impeller, motor, inverter)
 η_{sa} = fan shaft static efficiency
 L_{WA6} = A-weighted sound power level at discharge
 P_{sh} = shaft power

RLM E6-2528

EVOLUTION
IS IN THE AIR
RLM^{EVO}

Technical Data

Fan type RLM Evo	Motor power kW (max.)	Mains voltage V	Mains frequency Hz	Nominal speed 1/min	Nominal moment Nm	Nominal current A	max. operating frequency Hz	max. speed 1/min	Motor size **	Poles	approx. weight ~kg
RLM E6-2528-2W-16	3.00	400 Δ	50	2905	–	6.10	82	4780	100 L	2	33
RLM E6-2528-2W-14	2.20	230/400	50	2890	–	7.60/4.40	79	4590	90 L	2	29
RLM E6-2528-2W-13	1.50	230/400	50	2890	–	5.30/3.05	69	4040	90 S	2	25
RLM E6-2528-2W-11	1.10	230/400	50	2860	–	3.90/2.25	63	3640	80 M	2	22
RLM E6-2528-2W-10	0.75	230/400	50	2870	–	2.95/1.71	55	3180	80 M	2	20
RLM E6-2528-2D-08	0.55	230/400	50	2800	–	2.37/1.36	51	2880	71 M	2	17
RLM E6-2528-BI-BW-L	3.00	380...480	50/60	4500	6.4	6.4...5.1	–	4400	90	–	32
RLM E6-2528-BE-AY-L	1.50	*	*	4500	3.2	3.20	–	3910	71	–	22
RLM E6-2528-BI-IG-M	1.30	360...460	50/60	3100	4.0	2.60	–	3850	108/30	–	23
RLM E6-2528-BE-IG-M	1.30	*	*	3100	4.0	3.50	–	4000	108/30	–	18

* Motor for operation with inverter only (No mains operation).
We recommend: Danfoss VLT HVAC Drive FC-100.

Fan type code

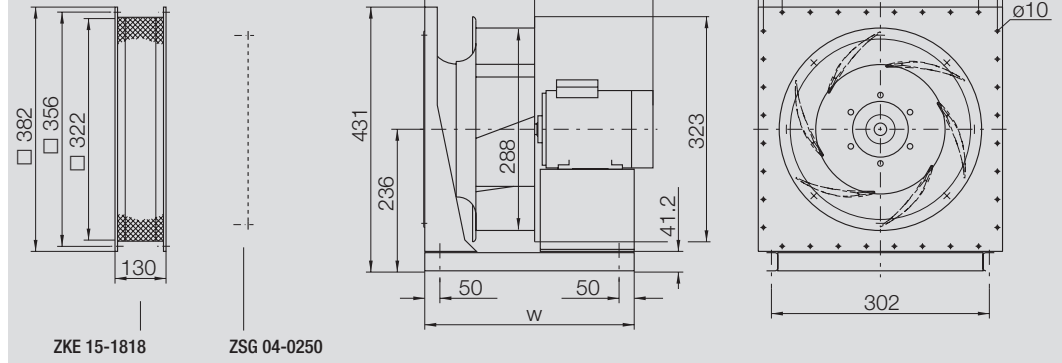
- W = Asynchronous motor according to efficiency class IE2 (High Efficiency)
- BI = Brushless DC motor with integrated control unit (efficiency class IE3 and higher)
- BE = Brushless DC motor with external control unit (efficiency class IE3 and higher)

Dimensions in mm, subject to change.

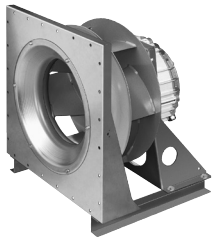


Motor **	k _{max}	w
71	412	357
80	456	377
90	513	408
100	569	430

RLM E6-2528-2 -
RLM E6-2528-BI-_-L
RLM E6-2528-BE-_-L

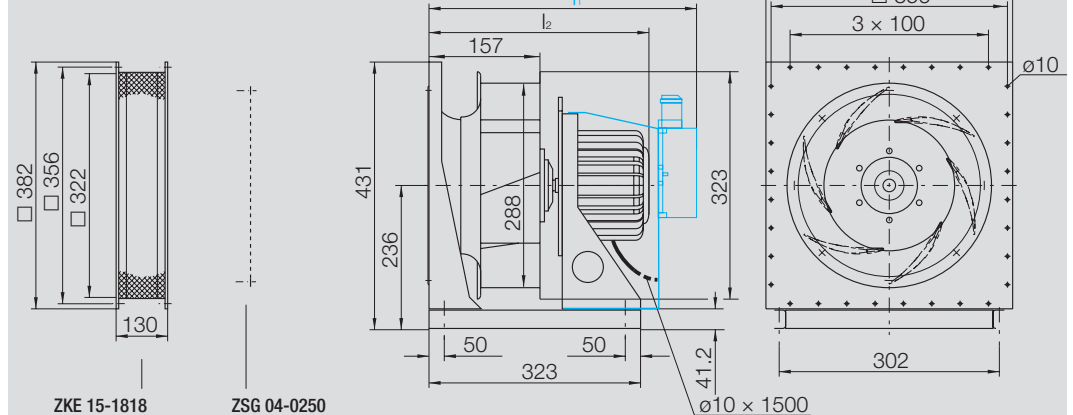


Dimensions in mm, subject to change.



	l ₁	l ₂
BI	454	-
BE	-	334

RLM E6-2528-BI-IG-M
RLM E6-2528-BE-IG-M



Оформить
Заказ