

RGA 31-3540

Technical Data in Class2 acc. to DIN 24166

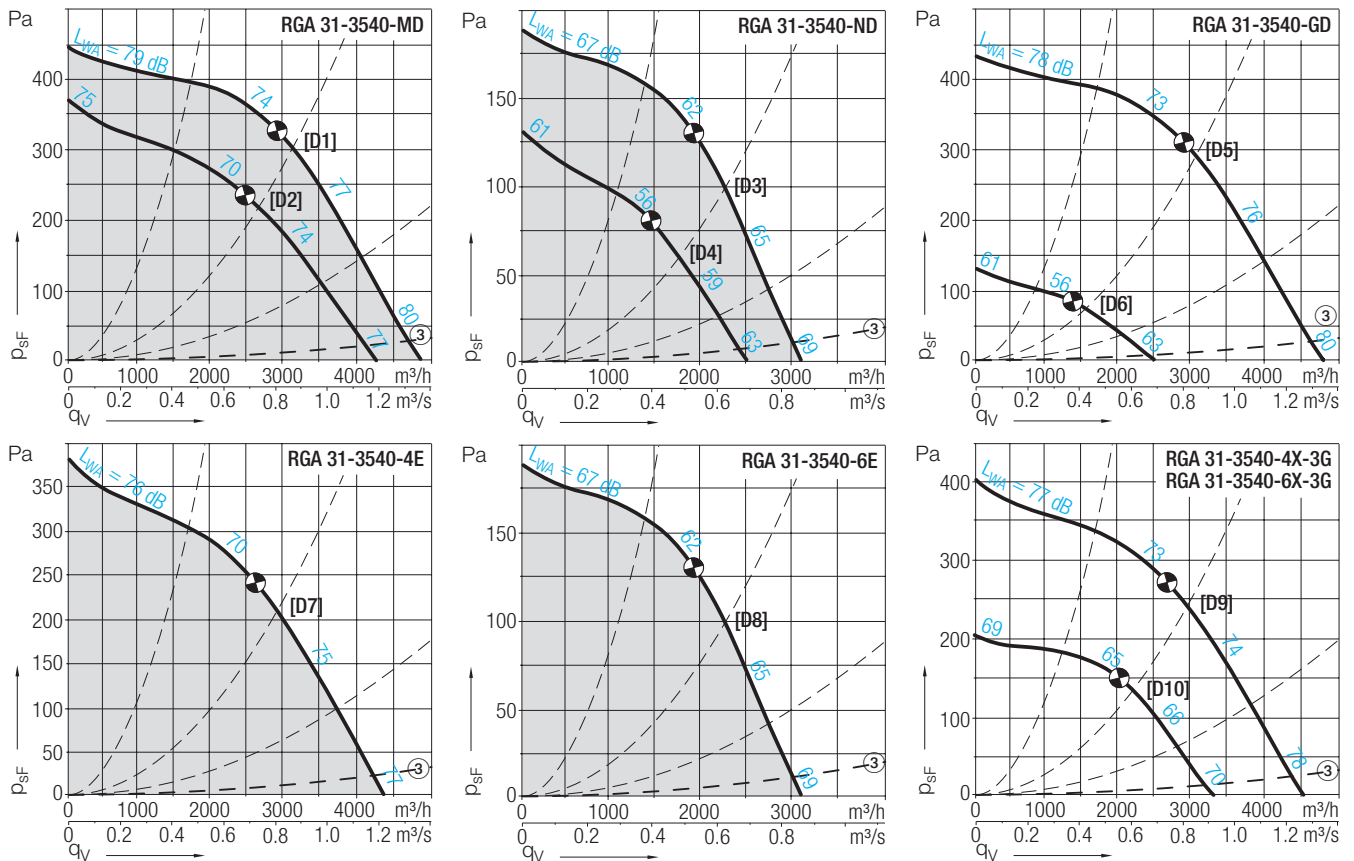
	Curves	Poles	Voltage/ Connection	Fre- quency	Speed	max. Power consumption	Nominal current	Starting/Full load current	V_{max}	L_{WA8} at V_{max}	Capa- citor	Protection/ Temp. class	Weight	Media temp.
RGA 31-			V	Hz	1/min	kW	A		m^3/h	dB ⑩	μF		kg	$^{\circ}C$
3540-MD•	[D1 D2]	4/4	400, 3~ Δ/Y	50	1400/1190	0.58/0.44	1.35/0.74	3.4	4830/4250	80/77	-	IP44/F	25	-20...+60
3540-ND•	[D3 D4]	6/6	400, 3~ Δ/Y	50	890/ 690	0.22/0.13	0.55/0.23	2.0	3100/2520	69/63	-	IP44/F	22	-20...+60
3540-GD	[D5 D6]	4/8	400, 3~ Y/Y	50	1380/ 700	0.62/0.12	1.20/0.38	3.7	4780/2520	80/63	-	IP54/F	27	-20...+60
3540-4E•	[D7]	4	230, 1~	50	1220	0.52	2.3	1.8	4340	77	12	IP44/F	25	-20...+55
3540-6E•	[D8]	6	230, 1~	50	890	0.20	0.91	1.7	3100	69	5	IP44/F	22	-20...+60
3540-4X-3G	[D9]④	4	400, 3~ Δ	50	1290	0.49	0.92	3.5	4540	78	-	IP44/F	27	-20...+40
3540-6X-3G	[D10]④	6	400, 3~ Δ	50	960	0.25	0.91	3.5	3290	70	-	IP44/F	27	-20...+40

• (also) stepless speed controllable by tension variation

⑩ All indicated sound values are sound power levels. For more calculations when determining the A-sound pressure level at any distances read the statements on part „Sounds“ in chapter „Description“.

Curves in Class2 acc. to DIN 24166

$\rho_1 = 1.15 \text{ kg/m}^3$



Accessories

	Isolator	Motor protection unit	Transformer 7 taps	Transformer 5-steps	Speed regulator electronic	Speed controller electronic
RGA 31-	ESH	ESM	ETO	ETH	EPH	EPA
3540-MD•	21-0030-65	04-0040-8D	10-0020-8D	35-0020-8D	-	83-0050-8D
3540-ND•	21-0030-65	04-0040-8D	10-0010-8D	35-0010-8D	-	83-0050-8D
3540-GD	21-0030-65	03-0040-8D⑥	-	-	-	-
3540-4E•	21-0030-25	01-0020-5E	10-0040-5E	35-0040-5E	03-0040-5E	83-0060-5E
3540-6E•	21-0030-22	-	10-0018-5E	31-0020-5E	03-0010-5E	83-0060-5E
3540-4X-3G	④	-	-	-	-	-
3540-6X-3G	④	-	-	-	-	-

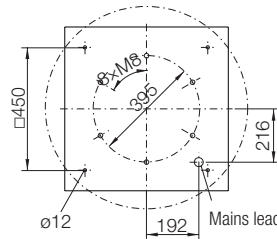
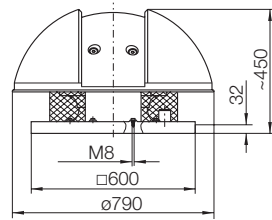


Оформить
Заказ

RGA 31-3540

Dimensions in mm, Subject to change.

RGA 31-3540-..



Accessories

RGA 31-

Weather protection top made of plastic.
Nicotra Gebhardt external rotor motor with impeller fitted directly.

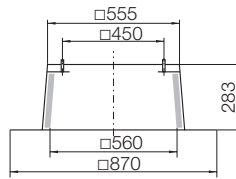
Accessories / Index

- ① When using back draught damper ZLK in connection with silencer upstand ZDS a spacer ZKK is required
- ② inclination in 5° steps up to 45° possible
- ③ Pressure loss at back draught damper
- ④ EX-ATEX types according to: II 3G c IIA T3
- ⑥ A protection for high speed is only active if Dahlander bridge is on place
- ⑫ Not for fans in ATEX available

ZBS 01-0056 [Al] 5 kg

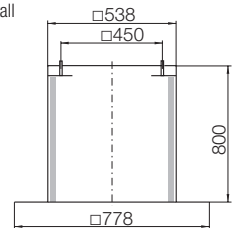
ZBS 20-0056 [St] 10 kg

Flat roof upstand



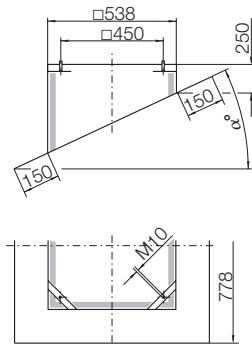
ZBS 23-0056 [St] 14 kg

Flat roof upstand tall



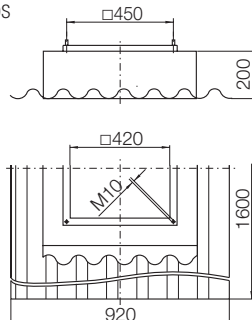
ZBS 09-0056-② [Al] 6 kg

Inclined roof upstand



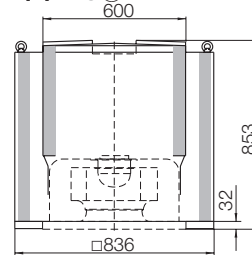
ZBS 11-0056 [GFK] 12 kg

Soaker sheet WDS



ZDH 20-0355 [St] 90 kg ⑫

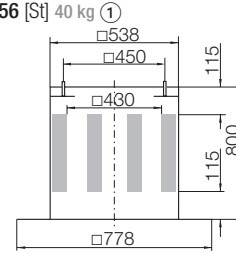
Overhead silencer



ZDS 01-0056 [Al] 29 kg ①

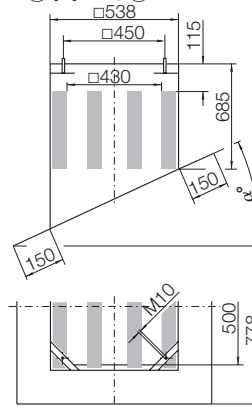
ZDS 20-0056 [St] 40 kg ①

Upstand silencer



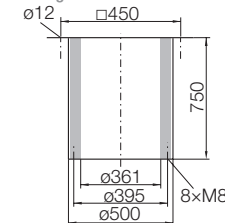
ZDS 09-0056-② [Al] 29 kg ①

Inclined roof upstand silencer



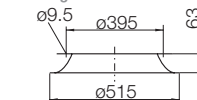
ZDR 30-0355 17 kg

Inlet silencer



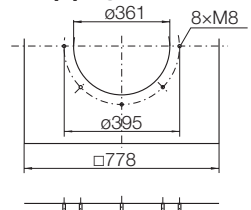
ZKD 01-0355 3.5 kg

Flanged inlet cone



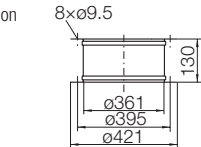
ZBU 01-0056-35 [St] 6 kg

Connection plate



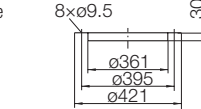
ZKE 11-0355 2.1 kg

Inlet connection (flexible)



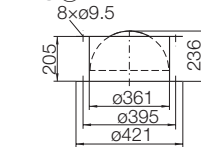
ZKF 11-0355 0.9 kg

Mating flange



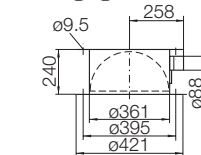
ZLK 01-0355 7 kg ①

Automatic shutter



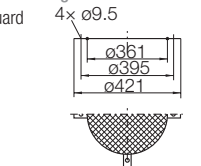
ZLK 21-0355 11 kg ① ⑫

Motor drive shutter



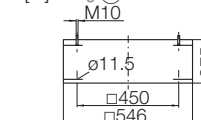
ZSG 04-0355 0.6 kg

Mesh inlet guard



ZKK 20-0056 [St] 14 kg ①

Spacer



Оформить
Заказ