

# RGA 31-2531

## Technical Data in Class2 acc. to DIN 24166

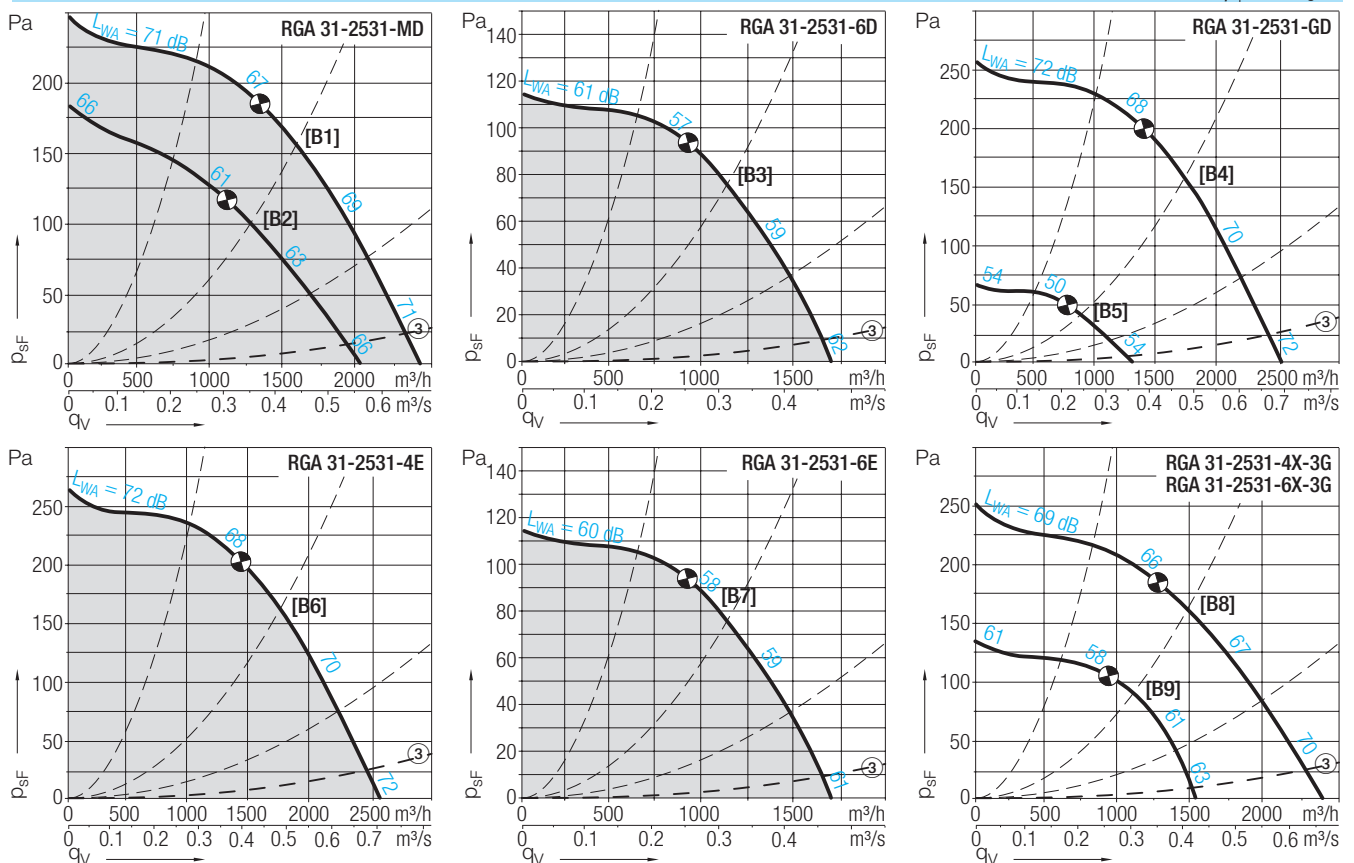
Curves	Poles	Voltage/Connection	Frequency	Speed	max. Power consumption	Nominal current	Starting/Full load current	$V_{max}$	$L_{WA8}$ at $V_{max}$	Capacitor	Protection/Temp. class	Weight	Media temp.	
RGA 31-	V	Hz	1/min	kW	A		$m^3/h$	$dB$ (10)	$\mu F$	kg	$^{\circ}C$			
2531-MD•	[B1 B2]	4/4	400, 3~ $\Delta/Y$	50	1340/1070	0.19/0.13	0.43/0.22	2.6	2440/2010	71/66	-	IP44/F	14	-20...+60
2531-6D•	[B3]	6	400, 3~ Y	50	940	0.13	0.41	1.8	1690	62	-	IP44/F	14	-20...+60
2531-GD	[B4 B5]	4/8	400, 3~ $YY/Y$	50	1400/ 710	0.23/0.06	0.50/0.18	3.2	2530/1270	72/54	-	IP44/F	15	-20...+60
2531-4E•	[B6]	4	230, 1~	50	1420	0.23	1.2	2.3	2550	72	6	IP44/F	14	-20...+60
2531-6E•	[B7]	6	230, 1~	50	920	0.12	0.54	1.5	1670	61	3	IP44/F	14	-20...+60
2531-4X-3G	[B8]④	4	400, 3~ Y	50	1310	0.19	0.40	2.8	2400	70	-	IP44/F	14	-20...+40
2531-6X-3G*	[B9]④	6	400, 3~ $\Delta$	50	980	0.16	0.88	3.6	1520	63	-	IP44/F	14	-20...+40

- (also) stepless speed controllable by tension variation
- \* these types do **not** have variable speed control by tension variation

⑩ All indicated sound values are sound power levels. For more calculations when determining the A-sound pressure level at any distances read the statements on part „Sounds“ in chapter „Description“.

## Curves in Class2 acc. to DIN 24166

$\rho_1=1.15 \text{ kg/m}^3$



## Accessories

	Isolator	Motor protection unit	Transformer 7 taps	Transformer 5-steps	Speed regulator electronic	Speed controller electronic
RGA 31-	ESH	ESM	ETO	ETH	EPH	EPA
2531-MD•	21-0030-65	04-0040-8D	10-0010-8D	35-0010-8D	-	83-0050-8D
2531-6D•	21-0030-35	01-0040-8D	10-0010-8D	35-0010-8D	-	83-0050-8D
2531-GD	21-0030-65	03-0040-8D⑥	-	-	-	-
2531-4E•	21-0030-22	-	10-0018-5E	31-0020-5E	03-0020-5E	83-0060-5E
2531-6E•	21-0030-22	-	10-0018-5E	31-0020-5E	03-0010-5E	83-0060-5E
2531-4X-3G	④	-	-	-	-	-
2531-6X-3G*	④	-	-	-	-	-

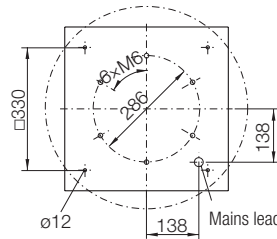
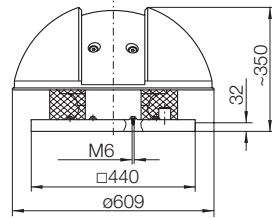


Оформить  
Заказ

# RGA 31-2531

Dimensions in mm, Subject to change.

RGA 31-2531-..



## Accessories

### RGA 31-

Weather protection top made of plastic.  
Nicotra Gebhardt external rotor motor with impeller fitted directly.

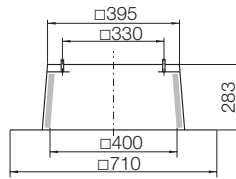
### Accessories / Index

- ① When using back draught damper ZLK in connection with silencer upstand ZDS a spacer ZKK is required
- ② inclination in 5° steps up to 45° possible
- ③ Pressure loss at back draught damper
- ④ EX-ATEX types according to: II 3G c IIA T3
- ⑥ A protection for high speed is only active if Dahlander bridge is on place
- ⑫ Not for fans in ATEX available

**ZBS 01-0040** [Al] 4 kg

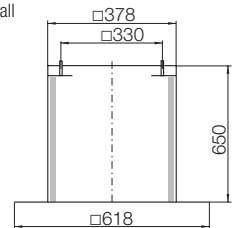
**ZBS 20-0040** [St] 8 kg

Flat roof upstand



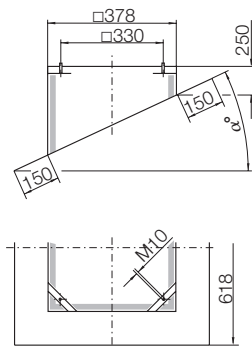
**ZBS 23-0040** [St] 10 kg

Flat roof upstand tall



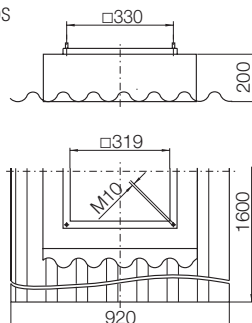
**ZBS 09-0040-②** [Al] 5 kg

Inclined roof upstand



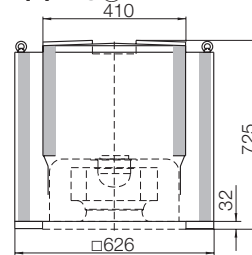
**ZBS 11-0040** [GFK] 11 kg

Soaker sheet WDS



**ZDH 20-0250** [St] 55 kg ⑫

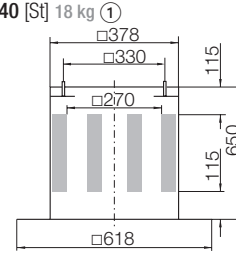
Overhead silencer



**ZDS 01-0040** [Al] 13 kg ①

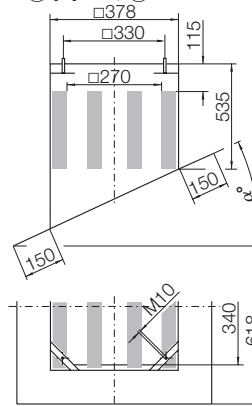
**ZDS 20-0040** [St] 18 kg ①

Upstand silencer



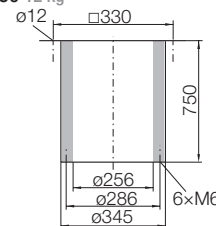
**ZDS 09-0040-②** [Al] 13 kg ①

Inclined roof upstand silencer



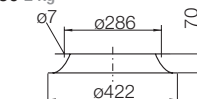
**ZDR 30-0250** 12 kg

Inlet silencer



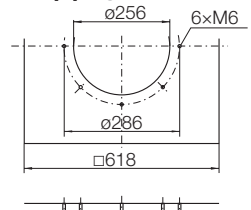
**ZKD 01-0250** 2 kg

Flanged inlet cone



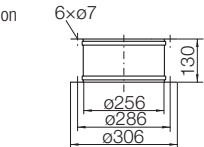
**ZBU 01-0040-25** [St] 4 kg

Connection plate



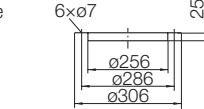
**ZKE 11-0250** 1.4 kg

Inlet connection (flexible)



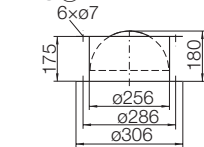
**ZKF 11-0250** 0.7 kg

Mating flange



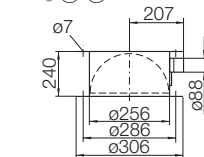
**ZLK 01-0250** 6 kg ①

Automatic shutter



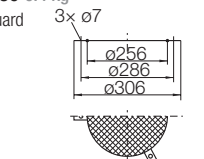
**ZLK 21-0250** 9 kg ① ⑫

Motor drive shutter



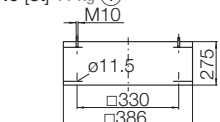
**ZSG 04-0250** 0.4 kg

Mesh inlet guard



**ZKK 20-0040** [St] 11 kg ①

Spacer



Оформить  
Заказ