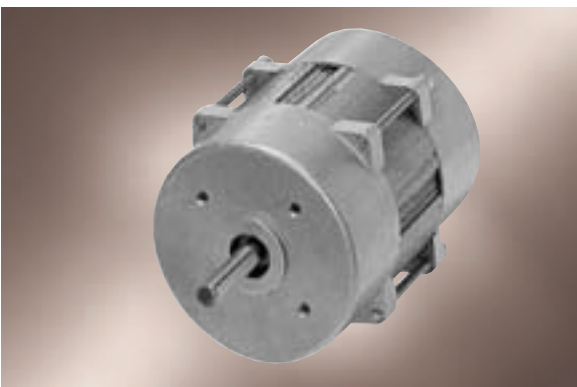


# Capacitor Motors

KM 43 closed



Standard version:

- direction of rotation clockwise (see connection diagram)
- winding symmetrical, also for rotation counterclockwise
- continuous operation S1
- ball bearings
- insulation class F(VDE/EN)

ebm-papst • Landshut

Nominal Data	Number of poles	Power output	Power input	Rated voltage	Frequency	Rated speed	Rated current	Rated torque	Capacitor	Mass	Dimensions mm	Characteristic curve	
Type		W	W	V	Hz	min <sup>-1</sup>	mA	Ncm	μF*)	kg	a	b	
KM 4320/2-2..	2	26	55	230	50	2650	230	9	1.4	1.2	20	77	1
KM 4330/2-2..	2	32	70	230	50	2700	260	11	1.6	1.5	30	87	2
KM 4340/2-2..	2	42	80	230	50	2750	320	14	2.0	1.8	40	97	3
KM 4350/2-2..	2	56	100	230	50	2750	380	19	2.5	2.1	50	107	4
KM 4360/2-2..	2	77	120	230	50	2750	530	27	2.5	2.4	60	117	5
KM 4320/4-2..	4	12	35	230	50	1300	140	8	1.0	1.1	20	77	6
KM 4330/4-2..	4	17	40	230	50	1300	170	12	1.2	1.4	30	87	7
KM 4340/4-2..	4	18	45	230	50	1350	200	13	1.4	1.8	40	97	8
KM 4350/4-2..	4	22	50	230	50	1350	220	16	1.6	2.1	50	107	9
KM 4360/4-2..	4	28	70	230	50	1350	290	20	1.8	2.4	60	117	10

\*) not supplied

